

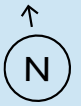
THE  
**COLUMBUS  
BUILDING**



7 WESTFERRY CIRCUS

*floor plans*

# floor plan



## Ground Floor

18,460 sq ft / 1,715 sq m

### Retail

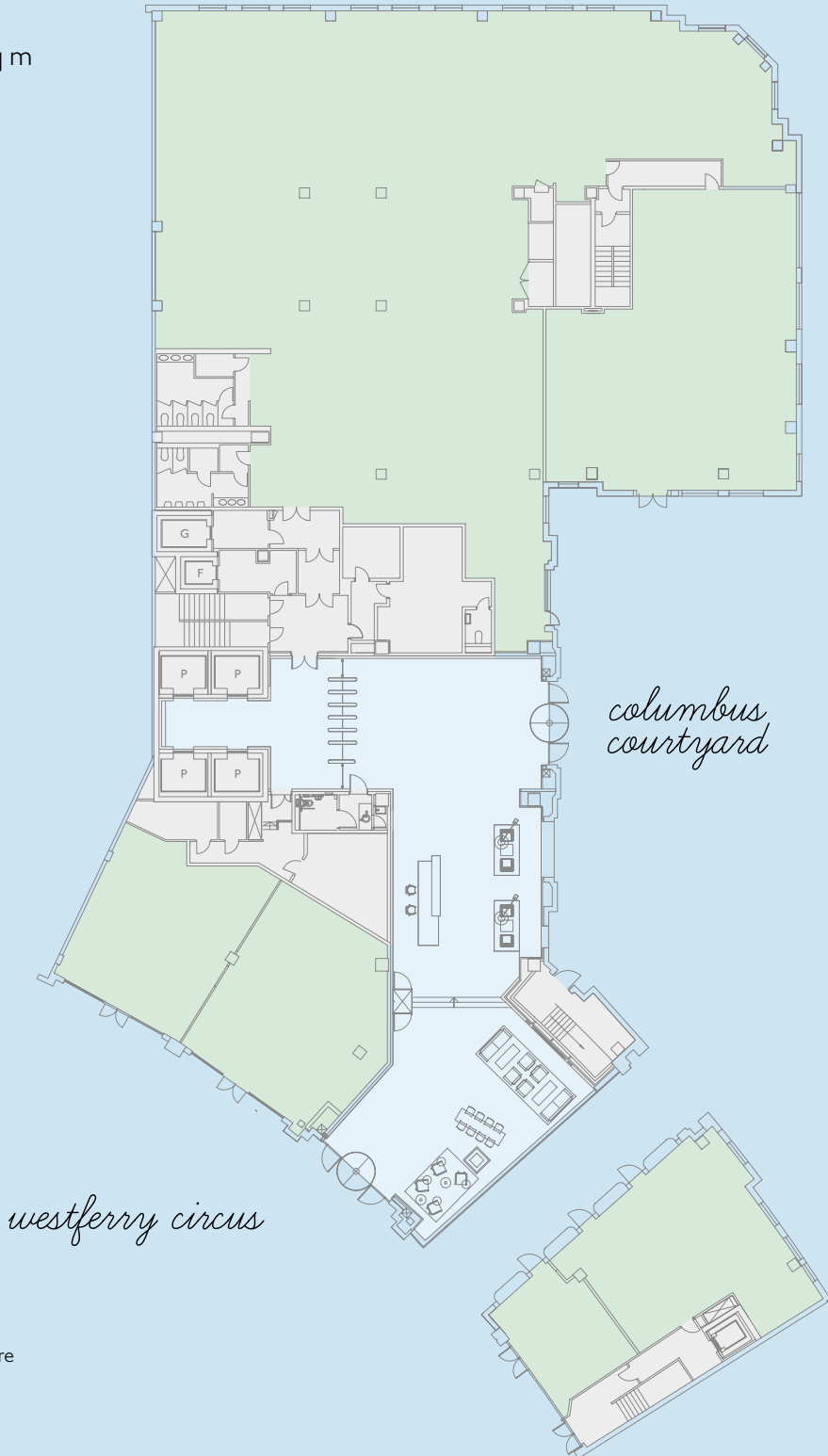
14,120 sq ft / 1,312 sq m

### Reception

3,800 sq ft / 353 sq m

### Security

540 sq ft / 50 sq m



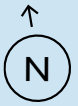
### Key

- Office
- Reception
- Retail
- Core

Floor plans not to scale. For identification purposes only.



# floor plan



## Typical Floor (2-5)

23,370 sq ft / 2,171 sq m



### Key

- Office
- Core

Floor plans not to scale. For identification purposes only.



# floor plan



## Sixth Floor

15,650 sq ft / 1,454 sq m



### Key

- Office
- Core
- Terrace

Floor plans not to scale. For identification purposes only.

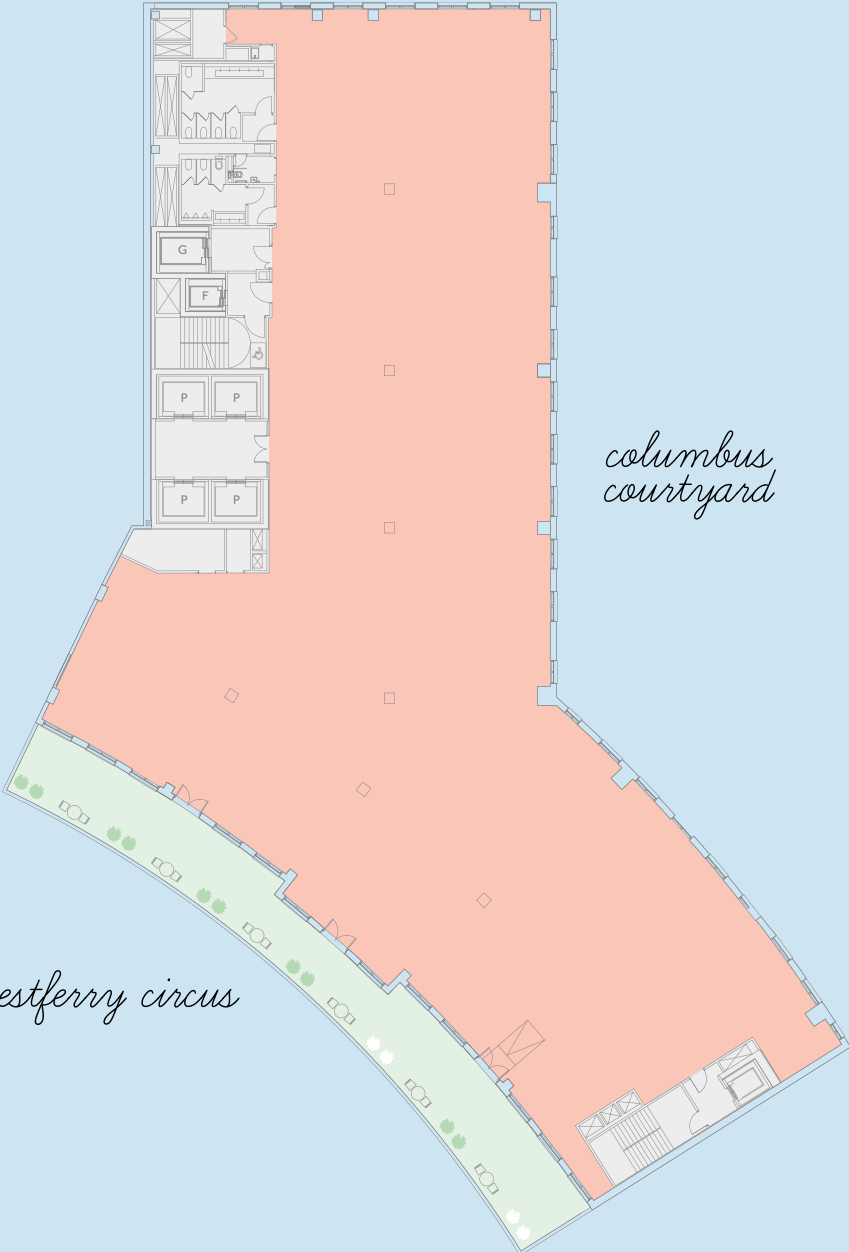


# floor plan



## Eighth Floor

13,630 sq ft / 1,266 sq m



### Key

- Office
- Core
- Terrace

Floor plans not to scale. For identification purposes only.







CANARY WHARF  
GROUP PLC

[thecolumbusbuilding.com](http://thecolumbusbuilding.com)  
[canarywharf.com](http://canarywharf.com)